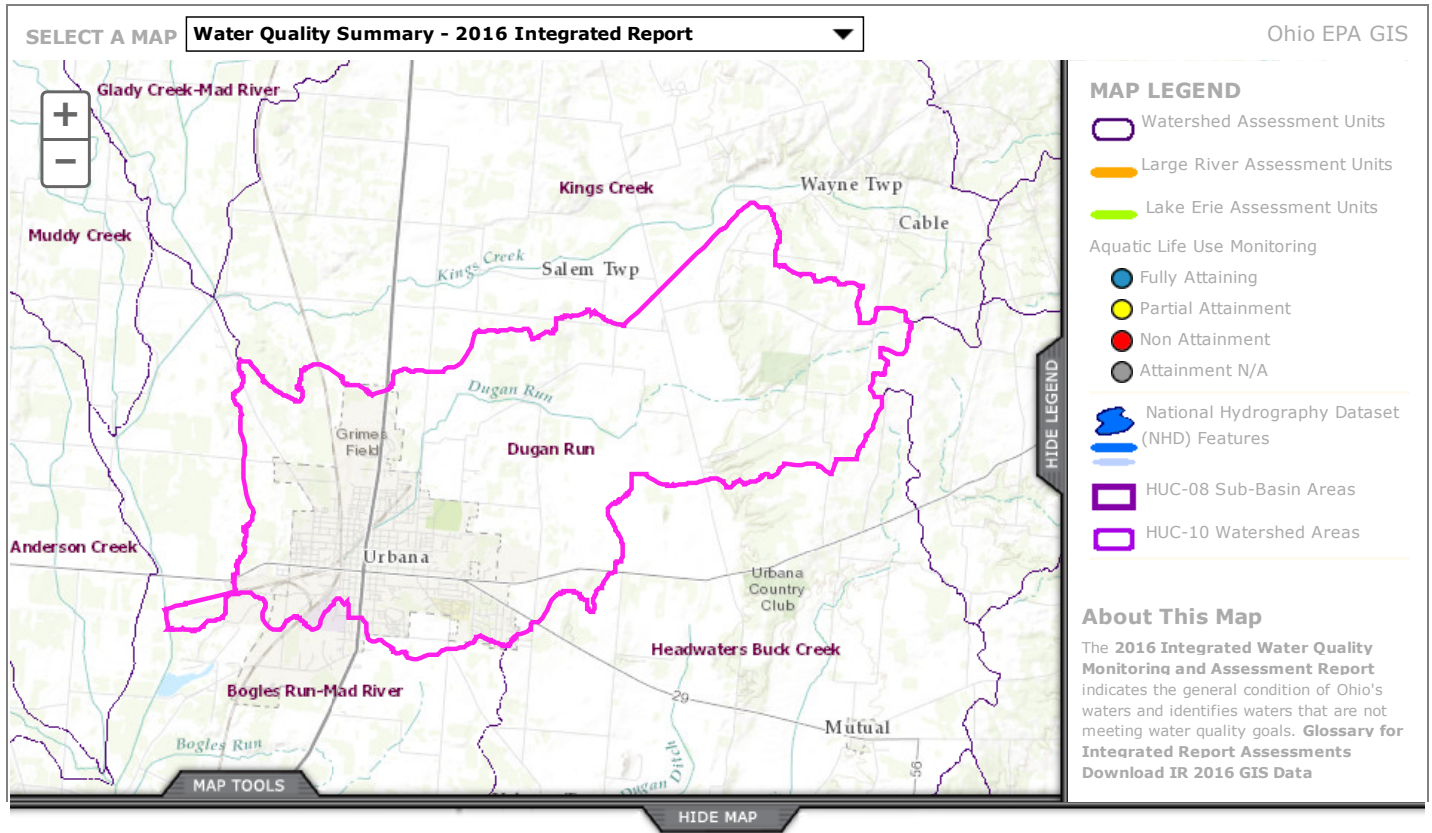


A single click selects an assessment unit. Use the radio buttons under map tools to change the type of assessment unit.



## Watershed Assessment Unit Summary

### Dugan Run

05080001 16 02

Area: 23.48 square miles

#### Total Maximum Daily Loads (TMDL)

Status: **Approved**

Reports: **Mad River: Great Miami River Watershed**

Next Monitoring: **2018**

The year in which Ohio EPA expects to revisit the assessment unit for comprehensive monitoring.

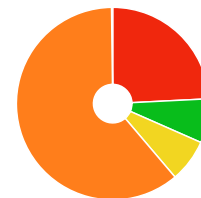
Priority Points Total: **2**

Aquatic Life: NA Recreation: NA Public Water: NA Fish Tissue: 2

Priority point values range between 1 and 20, and are calculated if any of the use assessment categories is 5 (Impaired; TMDL Needed) or the assessment unit is not impaired but is on the nitrate and/or pesticide watch lists for public drinking water supply.

#### Assessment Unit Landuse

- Developed 24.20%
- Forest 7.40%
- Grass/Pasture 7.20%
- Row Crops 61.00%
- Other 0.20%



### Aquatic Life Use Assessment

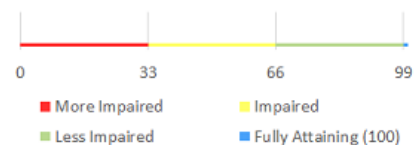
Reporting Category: Impaired; TMDL not needed - TMDL complete; historical data (4Ah)

Watershed Score

**0**

Aquatic Life Beneficial Uses: WWH

Sampling Years: 2003



#### Comments:

TMDLs for pollutants impairing designated or recommended aquatic life uses in the Mad River basin were approved by the U.S. EPA on January 26, 2010. The TMDL report is available via the Mad River tab at <http://epa.ohio.gov/dsw/tmdl/GreatMiamiRiver.aspx>. Monitoring in support of the TMDL report was conducted in 2003. The monitoring report is available at [http://www.epa.ohio.gov/dsw/document\\_index/psdindx.aspx](http://www.epa.ohio.gov/dsw/document_index/psdindx.aspx) (See Index Number EAS/2005-5-5).

**Causes of Impairment:**

priority organics  
organic enrichment (sewage) biological indicators  
nutrients  
metals  
direct habitat alterations

**Sources of Impairment:**

urban runoff/storm sewers  
sediment resuspension (contaminated sediment)  
channelization

---

**Recreational Use Assessment**

**Reporting Category:** Use attainment unknown (3)

**Causes of Impairment:**

**Recreation Use Score:** 0

**Recreation Use Class A:** No

---

**Public Drinking Water Supply Assessment**

**Reporting Category:** No waters currently utilized for water supply (0)

**Causes of Impairment:**

**Public Water Supplies:**

**Nitrate Watch List:** No

**Pesticides Watch List:** No

**Harmful Algae Watch List:** No

---

**Fish Tissue Assessment**

**Reporting Category:** Impaired; TMDL needed - historical data (5h)

**Causes of Impairment:**

**PCBs:** NA

**Hg(Mercury):** NA